

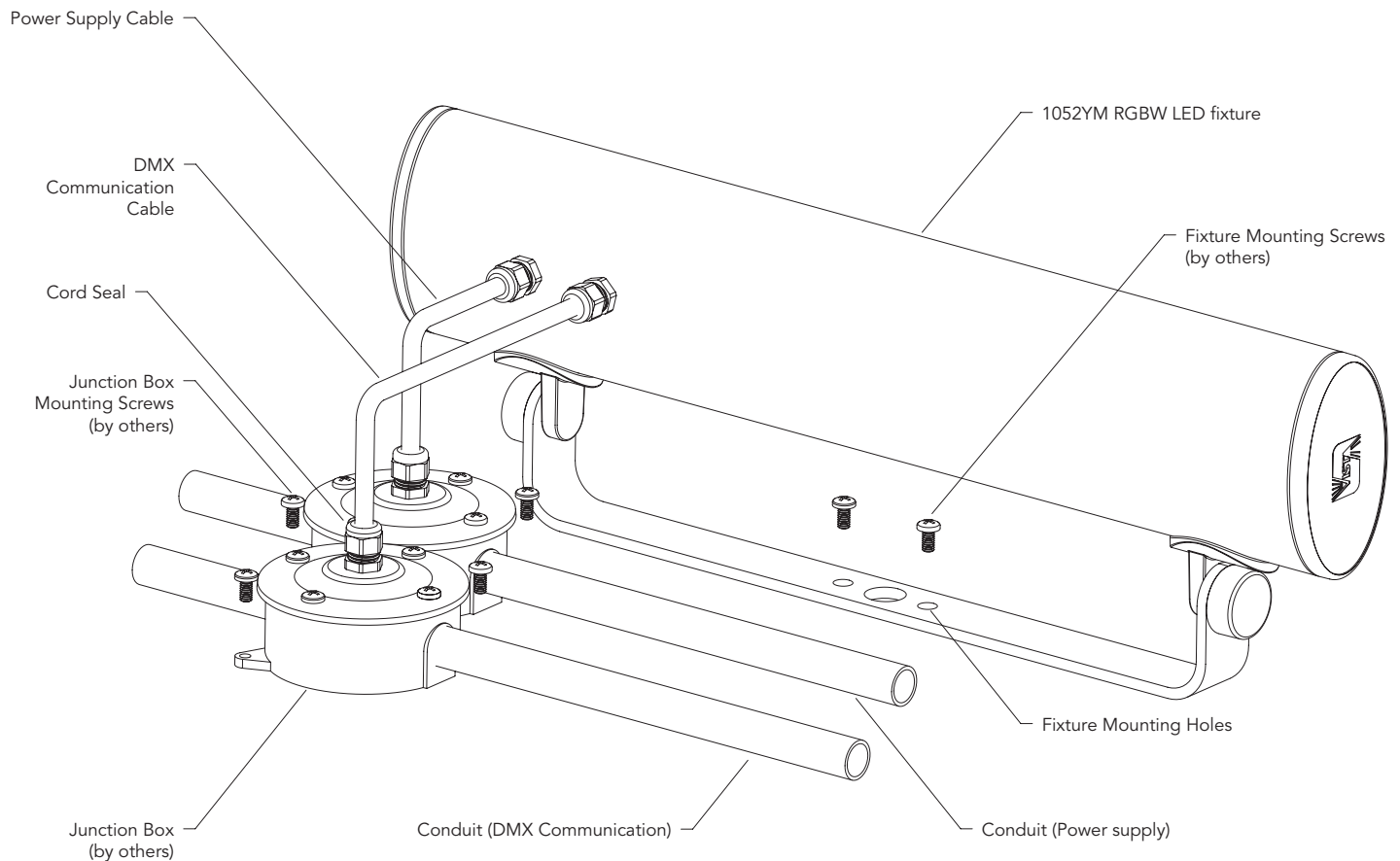


IMPORTANT NOTE: 1052YM-FL-RGBW must be installed and grounded in accordance with the National Electrical Code (NEC) and local codes. All Power supply and DMX communication wiring must be sealed from moisture. Use appropriate sealing material on wiring enclosures. Luminaire is wet location listed and suitable for wall, ceiling and ground mounted applications. Luminaire is suitable for mounting on all types of surfaces including concrete, block, and wood frame construction and may be surface mounted onto various horizontal or vertical walls, and a variety of ceiling surface orientations.



SURFACE / WALL / CEILING INSTALLATION

1. Position two wet location listed Junction Boxes (Junction Boxes by others) onto the desired surfaces in such a manner that conduit and wiring can be installed in each Junction Box cleanly such that damage to wiring is avoided. Make certain mounting methods do not compromise the internal sealed compartments of the Junction Boxes.
2. The 1052YM-FL-RGBW fixture requires two separate splicing Junction Boxes (one for Power, one for DMX communication [Junction boxes by others]). Connect separate conduit runs to each of the two Junction Boxes. Use UL listed outdoor rated conduit for in and out connections to ensure water tightness of splices.
3. Mount the 1052YM-FL-RGBW fixture to the surface in a location that allows for the Power supply and DMX communication cabling to easily access the Junction Boxes. Use the two threaded ½-13 tapped holes located near the center of the yoke for mounting with appropriate hardware (hardware by others).



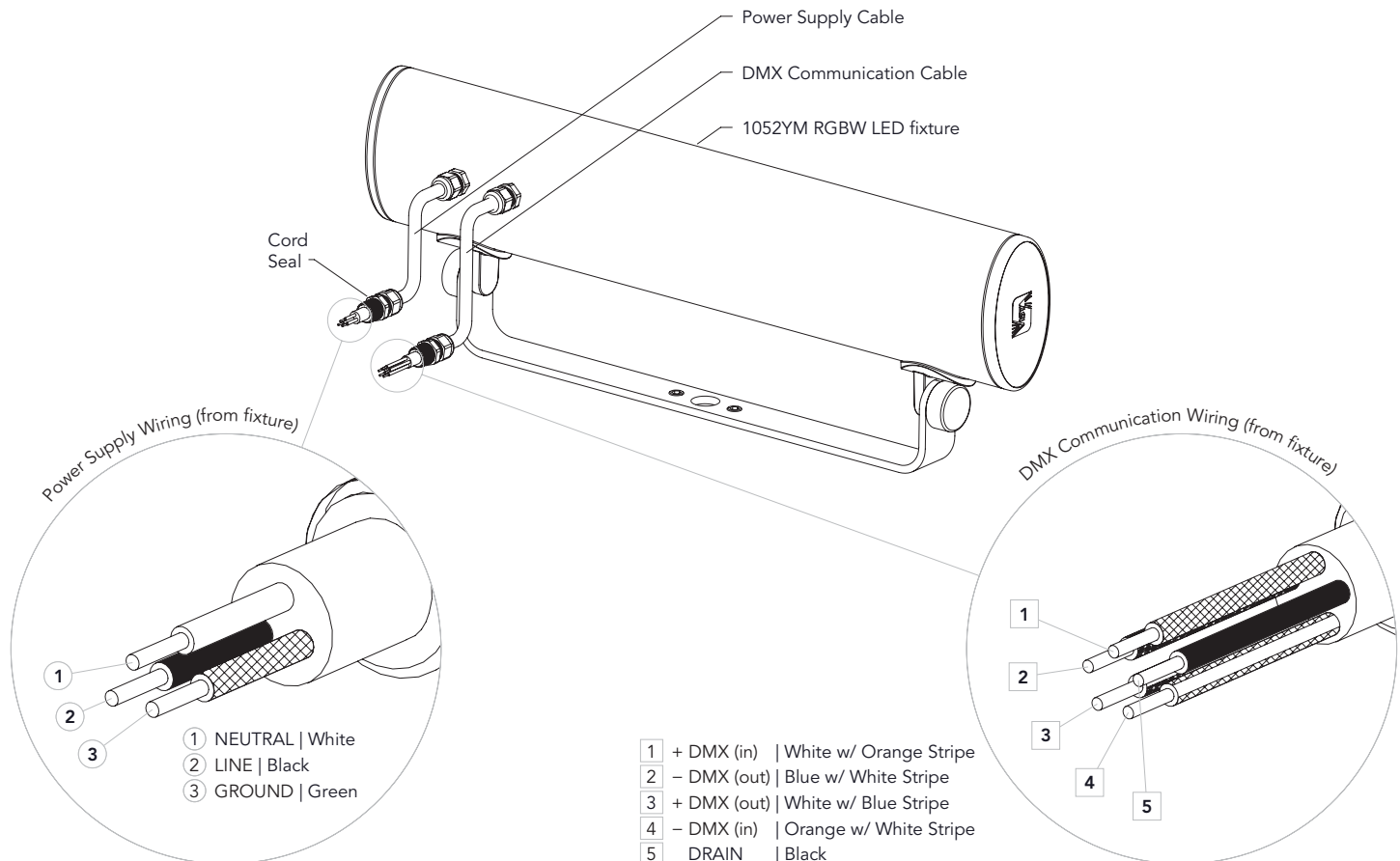


WIRING INSTALLATION

1. To install Power conductor and DMX communication wiring, attach water tight cord seal fittings to lids in each Junction Box Lid (Cord Seals provided)
2. Pull electrical Power supply conductors (line in) through conduit and into one of Junction Boxes. For through branch wiring, pull wires upward making a 6" loop above the top rim of the Junction Box. Designate this Junction Box for Power.
3. For DMX wiring, pull a suitable DMX cable in a similar manner to the Power supply conductors into the second Junction Box designated for DMX communication. It is recommended that the DMX cable should be suitable for EIA-485 (RS-485) use, with one or more low capacitance twisted pairs, with overall braid and foil shielding. Conductors should be 24 AWG (7/0.2) or larger for mechanical strength and to minimize volt drop on long lines.
4. In the Power splice Junction Box, pull the Power conductor wire loops out of the Junction Box, cut at center and strip the leads.
5. Using the silicone filled wire nuts (provided), connect the Power supply conductors in the Power Junction Box to the Power supply wiring of the RGBW LED fixture / Junction Box Cover noting the following polarity:

Supply (+) to Load (Black)
Supply (-) to Load (White)
Supply (Ground) to Load (Green)

6. In the DMX communication Junction Box, use the Wago® lever splices supplied to attach the incoming and outgoing DMX positive (+), DMX negative (-), and drain of the Surface Box Cover to the supply DMX communication cable. Please note the markings that identify the incoming DMX (+), DMX (-), and outgoing DMX (+) and DMX (-).
7. Terminate the DMX (+) and DMX (-) end cabling of the Surface Box Cover with 120Ω resistor.
8. Position the lid and affix the lid onto the Junction Box.
9. Tighten screws fully.
10. Aim and adjust fixture to target.
11. Supply power and DMX signal to the luminaire and check for proper operation.



At Vista's exclusive discretion, replacement or repair of authorized return items, found to be defective upon inspection within the warranty period, shall constitute fulfillment of all Vista obligations under its warranties.

