



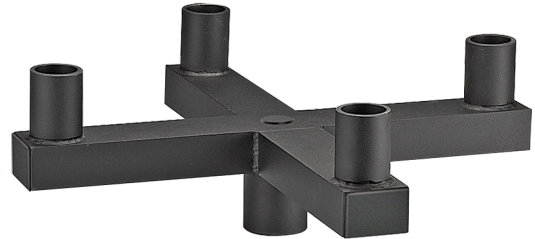
MODEL QTM – 200 | Specification Sheet
Commercial Series • Mounts

TYPE: MODEL:
PROJECT:

PRODUCT FEATURES



Material	Aluminum
Mounting	Tenon Slip-Fitter
Dimensions	24" W x 24" L



ORDERING INFORMATION

EXAMPLE: **QTM-200-B**

MODEL	FINISH
QTM-200	

MODEL	FINISH	ORDERING NOTES
QTM-200	B Black	Custom lengths available - Consult local distributor.
	Z Architectural Bronze	
	DZ Dark Bronze	
	GT Granite	
	W White	
	BR Architectural Brick	
	LZ Light Bronze	
	SB Special Bronze	
	GG Glossy Gray	
	R Rust	
	HG Hunter Green	
	WB Weathered Bronze	
	WI Weathered Iron	
	GM Graphite Metallic	
	G Verde	
	P Pewter	
M Mocha		
OF Olde Finish		



**PROFESSIONAL
OUTDOOR LIGHTING**

www.VistaPro.com · email@vistapro.com · Fax: (888) 670-VISTA (8478)
1625 Surveyor Avenue · Simi Valley, CA 93063 · (805) 527-0987 · (800) 766-VISTA (8478)

Vista Professional Outdoor Lighting reserves the right to modify the design and/or construction of the fixture shown without further notification.



SPECIFICATIONS

DESCRIPTION:

Quad post mount tenon bracket.

CONSTRUCTION:

Heavy wall extruded aluminum.

FINISH:

Powder coat finish available in Black, Architectural Bronze, Dark Bronze, Granite, White, Architectural Brick, Light Bronze, Special Bronze, Glossy Gray, Rust, Hunter Green, Weathered Bronze, Weathered Iron, Graphite Metallic, Verde, Pewter, Mocha and Olde Finish. Custom Powder coat finishes available on request.

MOUNTING:

Bracket slip-fits directly over tenons on Vista's stanchion mounts, post mounts, wall-mounted brackets, and standard 2" diameter pipe. Secured with two ¼"-20 Allen set screws (included).

DIMENSIONS

