



**VISTA  
PROFESSIONAL  
OUTDOOR  
LIGHTING**

# INSTALLATION INSTRUCTIONS

# 1407

120V SERIES

## Bollards and Beacons

**WARNING:** Luminaire must be installed and grounded in accordance with the National Electrical Code (NEC) and local codes. For portable stake or surface mount using a cord and plug, the luminaire must be plugged into a receptacle protected by a ground fault circuit interrupter (GFI). Failure to do so may result in serious injury and/or damage to the luminaire.

**MAINTENANCE:** To assure proper operation and efficiency and to prevent luminaire overheating, lens must be kept clean and free of dirt, dust, leaves, trash and mineral deposits from water. A regular schedule maintenance program is recommended.

**SAFETY WARNING:** Luminaire can become very hot depending on the lamp wattage used. Lens and housing around the lamp can become hot enough to blister hands. Particular care should be taken not to locate luminaires where small children can reach them if high wattage lamps are used.

**NOTE:** Always use UL recognized wire connectors for connections.

**NOTE:** Save these instructions for future reference.

**IN GROUND LUMINAIRE IS UL LISTED FOR ABOVE GRADE INSTALLATION ONLY.**

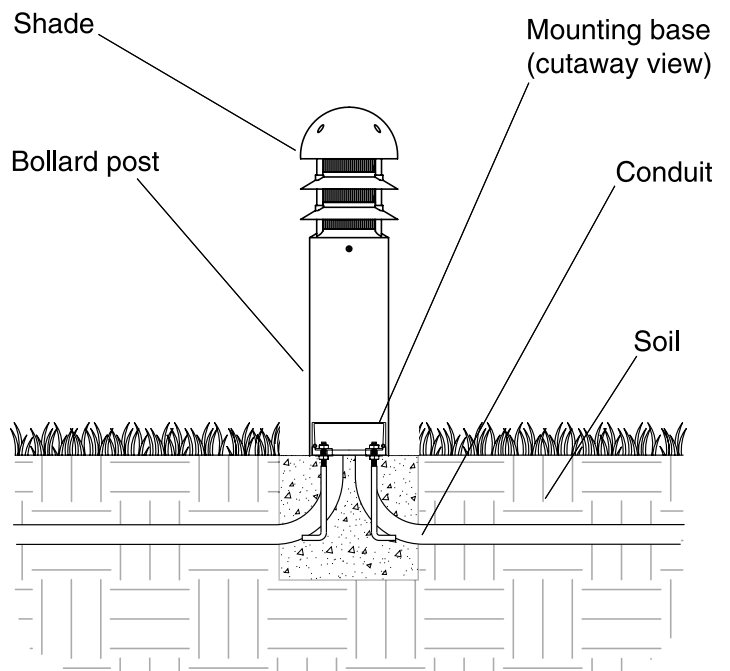


### Pour Concrete Installation:

**NOTE:** Your Vista line voltage Bollards may be installed directly into the ground, however, for a permanent and secure installation a concrete footing support for the bollard base is recommended.

1. Make sure electrical supply is off at circuit breaker before starting luminaire installation or servicing.
2. Using standard masonry procedures, support bollard base in selected location making sure foundation anchor nuts remain above concrete grade.
3. Install conduit.
4. Pull supply wires (line in) through conduit into bollard base.
5. Pour concrete at least 2" thick.
6. When ready to install bollard, attach luminaire leads to line in leads observing polarity, black to black, white to white and green to ground using silicone filled safety connectors (provided).
7. Slip bollard over base and attach with set screw in bollard using 1/8" allen head wrench.
8. Supply power to the luminaire and check for proper operation.

Lamp Information		
Cat No	Lamp Type	Max Watts
1407	A19	75





**VISTA  
PROFESSIONAL  
OUTDOOR  
LIGHTING**

## **INSTALLATION INSTRUCTIONS**

---

### **Lamp Installation/Replacement:**

**IMPORTANT SAFETY INSTRUCTIONS  
THE LIGHTED LAMP IS HOT!!**

**WARNING: TO REDUCE THE RISK OF FIRE, OR INJURY TO  
PERSONS:**

1. Turn off/unplug and allow to cool before replacing lamp.
2. Lamps get hot quickly! Contact only switch/plug when turning on.
3. Do not touch hot lens, guard or enclosure.
4. Keep lamp away from material that may burn.
5. Do not touch the lamp at any time. Use a soft cloth. Oil from the skin may damage lamp.
6. Do not operate luminaire fitting with a missing or damaged cover.

**SAVE THESE INSTRUCTIONS**

**CAUTION:** Do not exceed maximum wattage marked on luminaire label.

1. To prevent electrical shock, disconnect from electrical supply before service.
2. Loosen the cover screws and remove cover.
3. Remove lens and gasket.
4. Replace lamp with correct wattage and type marked on fixture label.
5. Re-install lens, gasket and cover and tighten cover screws evenly.