



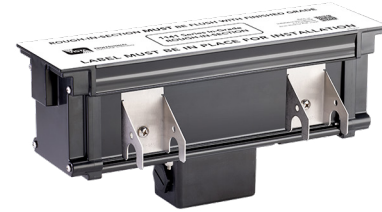
TYPE: MODEL:
PROJECT:

PRODUCT FEATURES



Material Injection-molded Polymer

Associated Fixture 1141



DESCRIPTION

The 1141 Series Rough-In Section (RIS) is a extruded/injection molded polymeric body with molded polymeric junction box equipped as a pour part assembly. The RIS may be pre-shipped to allow the installation of the pour part assembly without the need to have finished internal parts on-site. The RIS allows for electrical conduit connection. Drive over rated when properly installed in concrete with rebar re-enforcement. Rebar attachment kit constructed from stainless steel bracketry permanently affixed to RIS. The junction box suitable for through branch circuiting.

DIMENSIONS

